

Fan convector radiators

The smartrad Range

Dimplex smartrad wall mounted fan convector radiators provide **controllable, responsive** and **energy efficient** room heating and are a cost-effective alternative or complimentary solution to under floor heating. The smartrad has a more traditional radiator styling – but with a modern twist. Subtle, vertical contouring gently defines the shape and with its white finish, along with the glass panel options give a strong hint of a contemporary edge.

Optimised for use with the very latest heat pump technology, the SmartRad range is designed to provide individual temperature controlled room heating at water flow temperatures as low as 35°C, allowing heat pump efficiency to be maximised.

The smartrad is extremely flexible and can also be used with any Gas or Oil boiler as long as it supplies domestic central heating using hot water.

Fan convector radiators are cost effective and ideal for retro-fit installations in place of conventional radiators or in new buildings in conjunction with underfloor heating, - for example on the first floor – negating the need for a mixed heating circuit.

These slimline and stylish design along with the sophisticated control features and energy management options ensure that the radiators provide super-efficient room heating.

Energy saving features

- Energy efficient alternative to conventional radiators
- Fast response due to low water content
- Designed for low water temperature operation
- Optimises the heat pump Coefficient of Performance
- Ultra-smart thermostat for room temperature stability and rapid response
- Stage fan speed output plus “Eco” mode.
- Fan speed is automatically controlled based on room temperature. The lowest possible fan speed to meet the heating requirement will be automatically selected
- Heating output from 250W to 1800W at 35°C water flow
- Optional plug-in 24 hour / 7day programmers or run back timers.
- The control panel is integrated into the radiator casing and provides the following functions:
 - Eco mode: for use with pilot wire controls and optimizes the appliance for use on a household or commercial system.
 - Manual mode: max speed is selected (Low/Med/Max) and the appliance adjusts the output to meet the desired set temperature.

Other features

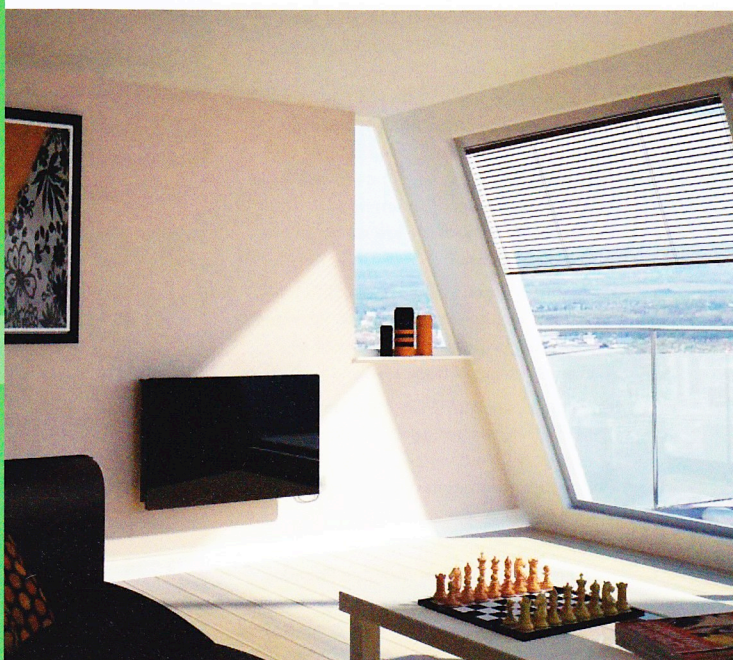
- Stylish, slim-line design
- Cost effective, practical alternative to underfloor heating
- Low noise operation
- Available in 4 sizes and 3 finishes
- Right or left hand plumbing connections
- Air bleed valve



smartrad SRX1 40M



smartrad White Glass SRX1 40WG



smartrad Black Glass SRX1 40BG